

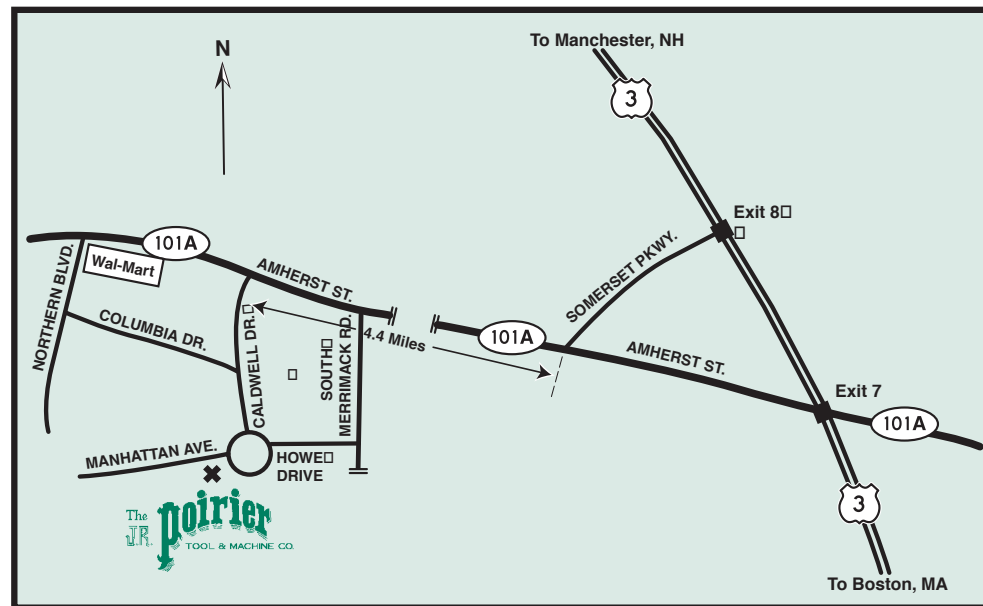


Our 10,000 square foot facility, state-of-the-art machine tools and highly skilled personnel are a proven source for all of your CNC Turning & Milling, Special Tooling, Machine Parts and Prototypes.

We specialize in quick turnaround work with dependable delivery and competitive prices.

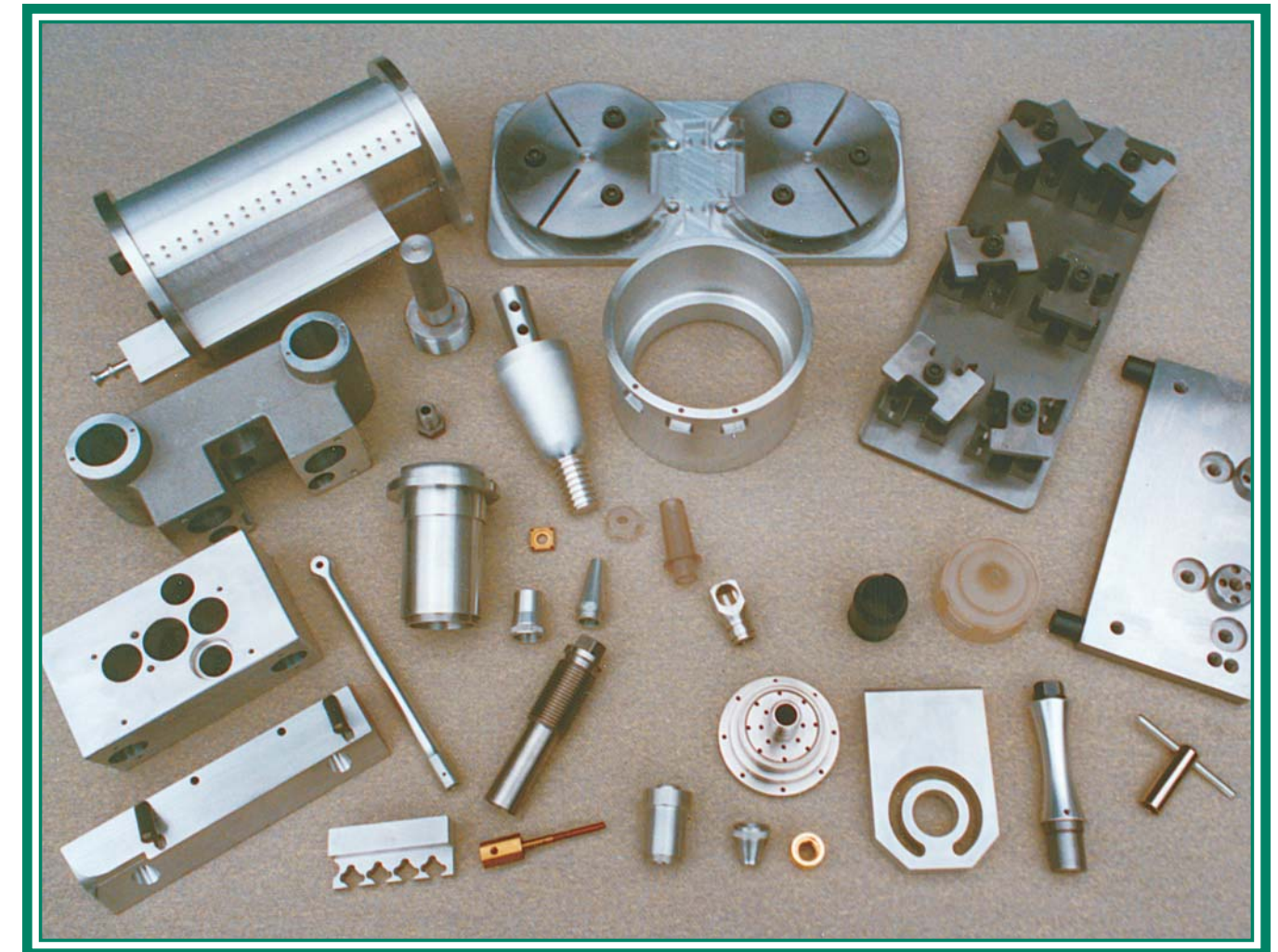


**Manufacturers and Designers
of Precision Machined
Components, Tools and Fixtures.**



From Route 3 take Exit 8 West onto Somerset Pkwy. Turn right onto route 101A (Amherst Street). Proceed for 4.4 miles, turn left at the light onto Caldwell Drive. Continue to small traffic circle, take first right off of circle onto Manhattan Drive. J.R. Poirier is the first building on the left hand side.

Welcome to J.R. Poirier Tool and Machine Co.



**4 Manhattan Drive
Amherst, New Hampshire 03031
Tel: 603-882-9279
Fax: 603-595-4668**



Since 1981 we have been making tough, precision machined parts for the most demanding industries.

Many industries have come to depend on J.R. Poirier to provide service that is backed up by innovative people and state-of-the-art equipment all dedicated to manufacturing excellence.

Whether you require one part or one thousand, J.R. Poirier is wholly dedicated to meeting your production needs with accuracy and efficiency.

WHO IS J.R. POIRIER?

The J.R. Poirier Tool and Machine Co. is a precision machining job shop. Started in 1981 by James R. Poirier, we strive to expand our manufacturing expertise by applying state-of-the-art equipment and innovative ideas to everyday manufacturing problems. We believe no job is too small to receive our full interest.

WHAT ARE OUR CAPABILITIES?

We work in ferrous and non-ferrous metals, hi-temp alloys, stainless steels and a wide range of plastics. We routinely work to tolerances of + or - .0002" and have a 3 ton overhead crane for heavy material handling. We can also provide a full range of services such as welding, plating, painting, and assembly. For specific size capability simply refer to this brochure.

HOW CAN WE HELP YOU?

From prototype to full production runs, we closely control scheduling to deliver what we promise - NO SURPRISES. If so desired, we can usually suggest small design changes to simplify manufacturing and therefore reduce cost, making your products more competitive.

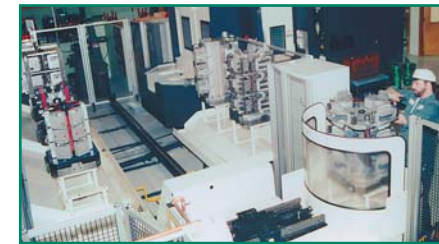
We maintain a wide range of stock for those RUSH jobs that can't wait for stock to be delivered. We will work those extra hours to meet your deadline. We look forward to serving you.

...your complete source for precision parts.

MILLING

MAKINO A66E Horizontal Machining Center

This is our flagship machining center equipped with a rail guided vehicle, 8 pallets and a 225 tool magazine. With a 14,000 RPM spindle, 2953 IPM rapid feed, auto tool measure and auto part measure, this is an extremely accurate and efficient machine aimed at short to medium production runs. Travels are 28.74" X, 28.74" Y, 31.5" Z. B Axis 360,000 positions. Max workpiece size is 31.5" diameter x 39.37" high x 1540 lbs.



MORI SEIKI M300L Traveling Column Vertical Machining Center

This is our most versatile machining center with the option to have 2 machining zones with 23.6" X, 19.8" Y travels or 1 machining zone with 63.0" X, 19.8" Y axis travels. The traveling column design with stationary tables allows oversized work to be machined with ease. 2 zone set up allows work to be loaded/unloaded in one station while machining occurs in the other station eliminating time and cost of load/unload.



MORI SEIKI MV-40 Box Way Vertical Machining Center

12,000 RPM with rigid tap
Travels: X 31.5", Y 16.1", Z 20.1"
787 IPM rapid traverse
20 tool double arm ATC



HARDINGE VMC600 Linear Way Vertical Machining Center

12,000 RPM with rigid tap
Travels: X 23.62", Y 20.08", Z 20.08"
1181 IPM rapid traverse
20 tool carousel ATC



CINCINNATI ARROW 500 Linear Way Vertical Machining Center

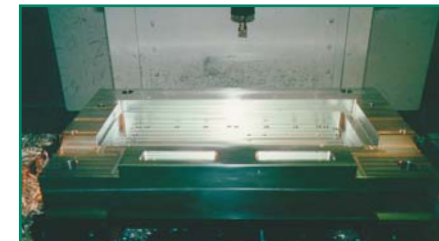
8,000 RPM with rigid tap
Travels: X 20.08", Y 20.08", Z 20.08"
21 tool carousel ATC



TURNING/MULTITASKING

MORI SEIKI MT-253S Multitasking Center

This 7 axis machine tool has 2 turning spindles both with full C axis control, one with A axis for part transfer. It also has a traveling column milling spindle with X, Y, Z and B axis capability, 8,000 RPM and a 42 tool magazine. This machine allows complex components to be produced in one setup, eliminating expensive fixturing and work-in-process since every cycle produces a finished part. Inaccuracies due to part handling and locating are also eliminated.



MORI SEIKI SL-25 Box Way CNC Turning Center

10" Turning Diameter
20" Turning Length
10" Chuck, 20 HP, 3500 RPM



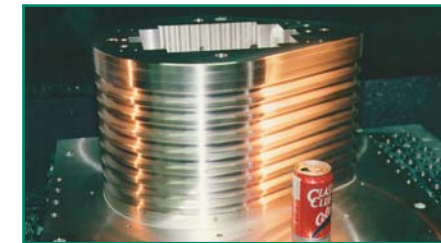
MANUAL MACHINES

BRIDGEPORT SERIES II (2) Vertical Knee Mill
Travels: X 28", Y 12", Z 12"

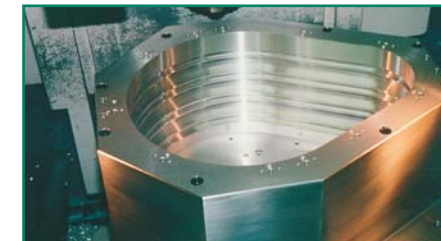


KEMPSMITH Horizontal Miller
Travels: X 29", Y 12", Z 16"

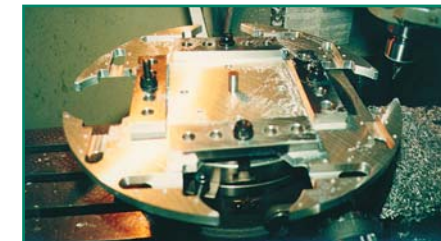
HARRISON M390 Gearing Head Lathe
15.75" Swing
23.0" Gap Swing
50.0" Center to Center



HARRISON M300 Gearing Head Lathe
13.12" Swing
25.0" Center to Center

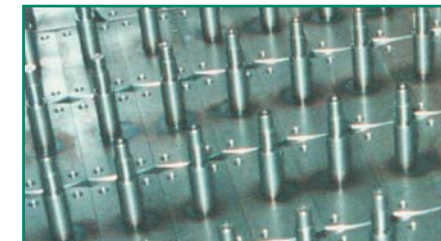


WARNER SWASEY Turret Lathe
1-1/2" Bar Capacity
14" Swing



SAWING/GRINDING/FINISHING

HEM SAW H100A Automatic Band Saw
Max Round: 12.75"
Tallest: 12.75" x 11.0"
Widest: 11.75" x 12.75"



KALAMAZOO FS-350 14" Blade Gearing Head Cold Saw

KALAMAZOO DISC & BELT SANDER
12" Disc 6" Belt



REID Semi-Automatic Surface Grinder
6" x 18" Travel

EMPIRE Bead Blaster
24" x 48" Cabinet

BURR KING Model 33 Vibratory Finishing

